

# BAILEY'S TEAM for AUTISM

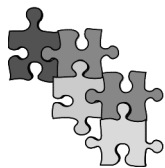
Raising funds and awareness in support of individuals living with autism spectrum disorders and their families, with a focus on research, education and programming.

Bailey's Team is helping to put the pieces together!

FALL 2017 Newsletter – Prepared by Sammi Robertson

Dear Friend,

Welcome to the eighteenth edition of our BAILEY'S TEAM for AUTISM newsletter! We have included updates on our fundraising success, our life with Bailey... his successes and challenges, our upcoming event schedule, as well as other plans for the future. We thank you for your continued interest and support and hope you enjoy our newsletter.



## Officers

Sammi Robertson  
President

Amy Laurent  
Vice President

University of Rhode Island

Dan Joyce  
Treasurer

Bright Horizons  
Family Solutions

Amy Tonkonogy  
Clerk/ Funding Director

WGBH Educational  
Foundation

## Directors

Thomas Buckley  
Foxborough  
Fire & Rescue

Sheila Burgess  
Special Education  
Consultant

Anthony Calcia  
Hockomock Area YMCA

Keith Duclos  
May Center for Evaluation &  
Treatment

Beth Jerskey\*  
\*Funding Coordinator  
Boston Child Study Center

Paul LaCava  
Rhode Island College

Douglas Robertson  
Visual Creations, Inc.

Betsy Roche  
The Arc of South Norfolk

## Honorary Board Members

Irwin & Roberta Chafetz

Stephen Shore

## BAILEY'S TEAM HAS REACHED THE \$1,000,000 MARK FOR FUNDS RAISED IN SUPPORT OF PEOPLE WITH AUTISM!



BAILEY'S TEAM HAD A BANNER YEAR...

OUR 6<sup>TH</sup> ANNUAL BAILEY'S RUN FOR  
AUTISM RAISED \$12,000 IN SUPPORT  
OF OUR MISSION!

\*\*\*\*\*

OUR 13<sup>TH</sup> ANNUAL BAILEY'S PAR FOR  
AUTISM CHARITY GOLF TOURNAMENT  
RAISED OVER \$38,000 IN SUPPORT OF  
INDIVIDUALS LIVING WITH AUTISM!

\*\*\*\*\*

THANK YOU TO OCEAN STATE JOB LOT  
FOR MAKING YET ANOTHER GENEROUS  
DONATION TO BAILEY'S TEAM!

\*\*\*\*\*

NEW ENGLAND JEWELRY COMPANY  
DONATES \$10,000 TO BAILEY'S TEAM!

\*\*\*\*\*



40 FAMILIES  
ENJOYED OUR  
7<sup>TH</sup> ANNUAL  
BAILEY'S ANIMAL  
ADVENTURE AT  
ROGER WILLIAMS  
PARK!

PLEASE JOIN US FOR OUR 9<sup>TH</sup> ANNUAL

**WINE & SPIRITS TASTING**

FRIDAY, NOVEMBER 3, 2017

AT SHOWCASE LIVE – PATRIOT PLACE  
Foxborough, MA

[See page 3 for more information.]

WE HOPE YOU WILL JOIN US FOR OUR  
7<sup>TH</sup> ANNUAL

*Bailey's Run for Autism*

SUNDAY, MARCH 25, 2018

Foxborough, MA



PLEASE JOIN US FOR OUR 9<sup>TH</sup> ANNUAL

**EDUCATION SERIES**

WEDNESDAY, APRIL 11, 2018

**HAPPY SQUARE PEGS**

Presented by Patti Menzel  
A member of autism's lost generation

HOLIDAY INN MANSFIELD - FOXBOROUGH  
Mansfield, MA

For more information about BAILEY'S TEAM for AUTISM, please visit [www.baileysteam.org](http://www.baileysteam.org)

## **A Message from the President**

### **FAMILY UPDATE**

Dear Friends,

I am very happy to report that 2017 has been a good year for Bailey's Team and for our family. However, it has not been without its challenges. Although we have continued to experience much success raising funds and awareness in support of people on the autism spectrum, our own family continues to go through some difficult transitions as Bailey approaches adulthood.

By the time you read this, Bailey will have turned 18 on October 2<sup>nd</sup> – an age we have been awaiting with much excitement *and* trepidation. This is the year that we have been talking about, dreading, preparing for, and looking forward to all at the same time since he was born... as all families do. What makes our world so different is that as Bailey becomes an adult in the eyes of the law, he becomes a ward of the state. In other words, as a person with special needs, one who is unable to take responsibility for himself, understand consequences and make decisions, he requires a guardian. This means that if we so choose, and OF COURSE WE DO... it is up to us to address the court, and go before a judge to present our case that we are best suited to care for our son – as we have done so for the past eighteen years - as his guardian because he cannot do so. Seems kind of f@%\*ed up doesn't it? The process isn't difficult, simply laborious and extraordinarily time consuming and time sensitive! For those who do not need to be troubled with even more details, I will spare you more reading – for those who would like more information, please visit [www.mass.gov](http://www.mass.gov) (and for those from other states, please visit your own State's website).

At nearly 18 (as I write this), Bailey stands approximately 5' 8" tall and is very handsome. He continues to be happy and content most of the time often with a big smile on his face. This of course has been difficult to capture on film as his "go to smile" is rather awkward on command. I have since learned, however, to say "laugh" instead of "smile," just in time for his senior pictures, which, as you will see below, came out quite awesome!

His language continues to improve which is something we celebrate every day. He never ceases to amaze us with a new word, phrase or expression. He picks up language from YouTube videos and movies, so you can imagine what we hear! The good news is that he often uses these less desirable phrases appropriately, which is what counts (believe it or not).

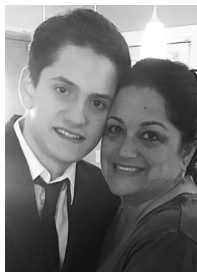
Last year, Bailey attended his Jr. Prom with his "NT" (neurotypical) friend Emma. Members of his teaching staff were present at the event and he did wonderfully among his peers. A very exciting and successful milestone! And this summer, before the start of his summer school program, he participated in a wonderful camp program that Bailey's Team funded and helped to facilitate in collaboration with Brown University and the Rhode Island Philharmonic Orchestra and Music School. The Miracle Project provided a wonderful experience for Bailey, as he was able to enjoy participating with others with varying needs through music, movement and expression. (Please see page 5 for more information about The Miracle Project)

He is now a senior in High School and spends a lot of his time in the community with support from his teachers and aides. He works at a real estate office two times each week helping with mailings, labeling and stamping envelopes – something I have not been able to get him to do for quite some time!! 😊

He continues to become most frustrated by the same two culprits: when the Internet loses its connection, and when he is losing an on-line videogame. His outbursts are louder and his inability to self-regulate can become hard to manage. We are working hard to teach him skills so that he can de-escalate on his own more quickly; with the goal of reducing his level of anxiety so that he knows that everything will be ok.



Emma & Bailey at  
NAHS Jr. Prom  
April 2017



Bailey & Mom  
April 2017



Bailey at Special Olympics  
Opening Ceremonies  
May, 2017



Bailey & Julie Etter  
Berkshire Hathaway  
Page Realty, Wrentham



Bailey's Senior Picture  
NAHS



Bailey's 1<sup>st</sup> day  
of Senior Year  
September, 2017

## FAMILY UPDATE

[Continued from page 2]

And now for the others...

Rachel is a junior at Southern New Hampshire University (SNHU)! She worked during the summer at Ulta in North Attleboro and travelled back and forth to her apartment in Andover that she shares with her boyfriend, Jeff.

Spencer is now a junior at NAHS and continues to work hard at his studies. He has his Learner's Permit and is now just waiting for his appointment to get his Driver's License ☺! He recently secured a job at Banana Republic at the Wrentham Outlets AND has begun to consider which college he would like to attend in the fall of 2019! He is interested in film studies, direction and production and is excited to look for opportunities in this area!

Lindsay, Brent, Georgie and Bernadette returned to the Cape this summer for our annual Cape Cod visit at "Mimi & Pops' house!" The girls continue to grow so fast (now ages 3 and 5) and we look forward to our time with them. Lindsay and family recently relocated to Newtown, PA, just outside of Philly into a beautiful new home; and the next time we will be together will be in December as we travel as a family to Key West... assuming it is still there!

Doug and I are still *keeping it together* as we prepare ourselves and Bailey as he enters adulthood, while we also do our best to support the others as they continue on their respective journeys. We thank you always for being a part of our team and for your ongoing support and generosity as we continue to help those with autism and their families!

*With love from Sammi & Doug Robertson*



Bernadette, Rachel, Lindsay & Georgie



Spencer & Bailey at Surfer's Healing



Doug & Lindsay at Chatham Bars Inn Beach Grille

## Please Join Us for the 9th Annual Wine Tasting, Art Show & Comedy Night!

To benefit  
Bailey's Team for Autism

Friday  
November 3, 2017  
7:30 pm

### Showcase Live

Patriot Place  
Foxboro, MA

\$75.00 per person

Special performance by  
Boston's favorite comic!



"Tony V."  
10:00 pm

Event includes a savory menu, cash bar, silent auction,  
raffle, creative art display and live entertainment!

Wine & Spirits selections presented by

### Route 106 Wine & Spirits

377 Chauncy Street, Mansfield, MA



All proceeds from this event will go to **Bailey's Team for Autism** raising funds and awareness in support of individuals living with autism spectrum disorders and their families.

## TRIBUTE CARDS

In 2008, we introduced our Tribute Card Program, providing individuals with the opportunity to make a donation in honor of a special someone, in celebration of a special occasion or in memory of a loved one. To date, this initiative has raised over \$10,800 for Bailey's Team.

If you would like to make a donation in honor or in memory of someone special, please visit [www.baileysteam.org](http://www.baileysteam.org) and download our tribute form for more information.



**BAILEY'S TEAM IS PROUD TO WELCOME THREE NEW BOARD MEMBERS...  
KEITH DUCLOS, PAUL LACAVA & BETSY ROCHE**



Keith Duclos holds a Master of Management of Human Services degree from the Heller School at Brandeis University and has devoted his 25-year career to creating and overseeing innovative solutions that support adults with different abilities to live healthy, happy, and productive lives.

Prior to becoming the Director of Adult Shared Living at May Institute, Keith founded Side By Side Supported Living, an agency that provided shared and supportive living services to adults with different abilities. As the Founder/President, Keith built an organization that was able to meet the complex and evolving needs of its clients and their families.

Keith carries his passion to help people realize their goals into his personal life. For the past 20 years, he has been a shared living provider for a gentleman with intellectual disabilities.

Keith and his family live in Brookline, MA.

Paul LaCava is an associate professor of special education at Rhode Island College (RIC). He teaches undergraduate courses in elementary/special education and graduate courses in autism spectrum disorder (ASD) and research methods. Paul is the program director of RIC's Certificate of Graduate Study in Autism Education program and Exceptional Learning Needs Master's program. He is also the Research Coordinator at the Sherlock Center on Disabilities at RIC.



Paul has over 25 years of experience working in the field of autism/developmental disabilities as a special educator, social skills group leader, respite provider, consultant, and researcher. His expertise is in special education, inclusion, collaborative consultation, positive behavior supports, ASD historical perspectives, evidence-based practices, and social emotional skills.

Paul has a B.A. in History from Central Connecticut State University (CCSU). His initial training in teaching and disabilities was also at CCSU. Paul attended the University of Kansas where he earned his masters and doctorate degrees in special education.

Paul, his wife Lynda and their son reside in Rhode Island.



Betsy Roche, M.Ed., has worked at The Arc of South Norfolk since 2000. She has held a variety of roles during her tenure at The Arc. Starting out in direct service, Betsy was the Program Coordinator for the Day Habilitation Program, teaching daily living skills to adults diagnosed with developmental disabilities. Other roles include Assistant Director of Family Support, Director of the Family Autism Center (FAC), and Director of Development. Betsy's early experience as a provider of direct services set the foundation for her passion and commitment to individuals diagnosed with developmental disabilities and autism.

During her time as the Director of FAC (7 years), she was a part of the team that helped launch the ALEC (Autism and Law Enforcement Education Coalition) Program on a national level. She did this by securing

funding through FEMA for ALEC trainers to train firefighters on ASD and best practices during emergency situations involving people with ASD. Due to her successful grant writing and fundraising efforts as Director of FAC, she was asked to take on the role of Development Director for the entire agency, a position she has held since 2013.

In addition to her roles at The Arc, Betsy has provided community-based care to families, supporting children and adults diagnosed with autism in their home and community settings.

Betsy and her husband, Brian, live in Mansfield with their three children.

**THANK YOU TO  
DANIELLE DESROSIERS & JULIE O'BRIEN**



We offer a heartfelt thanks to both Julie & Danielle who have decided to step down from their Board positions with Bailey's Team.



We thank them both for their dedication and commitment and more importantly for their ongoing friendship and support!

**A QUICK SWITCH FOR  
DOUG ROBERTSON & AMY LAURENT**



Thank you to Doug for acting as "VP" since Bailey's Team was incorporated in 2008; he will step down from this role and remain as a Board Director.



And a special thank you to Amy Laurent for transitioning her role from Director to Vice President, as she will take on the added responsibilities as an officer of the Board!

## VANTEL PEARLS SUPPORTS PEOPLE WITH AUTISM DONATING \$10,000 TO BAILEY'S TEAM!

In May of this year, Sugar Frates of Vantel Pearls (pictured at right) called Bailey's Team mentioning the company's desire to make a donation in support of autism research, early diagnosis and early intervention. They were seeking a local organization that did good work in the community supporting these three areas of interest. I quickly visited with Sugar and the company's Founder and CEO, Joan Hartel, to learn more about them and to introduce Bailey's Team.

Vantel Pearls is a national direct sales company located in Mansfield, MA, importing oysters grown for pearls, from Japan and the South Pacific. Each oyster, when opened, contains at least one genuine pearl. The company then sets the pearl into a piece of jewelry of the customer's choice. They are a warm and very welcoming group and invited us to participate at their annual conference during lunch. After delivering a speech and presenting a video introducing Bailey's Team, we were pleasantly surprised when they presented us with a check for \$10,000 made out to Bailey's Team!



Pictured above: (Left to right)

Bailey's Team Board Member, Doug Robertson, Joan Hartel, CEO and Founder of Vantel Pearls, Sammi Robertson, Sugar Frates of Vantel Pearls and Bailey's Team Board Treasurer, Dan Joyce

## BAILEY'S TEAM THANKS VANTEL PEARLS FOR THEIR KINDNESS AND GENEROSITY AS THEY HAVE CHOSEN TO SUPPORT PEOPLE WITH AUTISM AND THEIR FAMILIES!

### BAILEY'S TEAM DONATES 10 IPAD MINIS TO EASTER SEALS OF MASSACHUSETTS!



Pictured at left: (L to R):

Aimee Zube,  
Foundations & Community Relationship  
Manager at Easter Seals,  
Sammi Robertson,  
Bailey's Team Board President  
Alice Conroy,  
Bailey's Team friend and member,  
&  
Ann Donah,  
Director of Development at Easter Seals



### BAILEY'S TEAM COLLABORATES WITH THE MIRACLE PROJECT, BROWN UNIVERSITY AND THE RHODE ISLAND PHILHARMONIC...

Earlier this year, Bailey's Team funded a very special program, The Miracle Project New England. After watching the 2007 Emmy-Award Winning HBO film, Autism the Musical, it has been a dream to bring such an innovative and effective program to New England. Many individuals on the autism spectrum respond to the arts, such as movement, music and expression. Although they may not have extensive language, individuals with autism can still express themselves when given the opportunity in a supported environment. Borrowed from the original program founded by Elaine Hall in Los Angeles, CA, The Miracle Project New England was first piloted as a week-long camp in June and will be rolled out as a weekly class to those of all abilities beginning in February of 2018. For more information on The Miracle Project New England, please visit [www.asap-brown.org](http://www.asap-brown.org).



Left: (L to R)  
Andrew, Phil &  
Bailey

Bottom Left:  
Young adults  
performing at the  
Miracle Project  
New England

Bottom:  
The Miracle Project  
New England Team  
of Staff & Volunteers



Enjoy pictures from our 13<sup>th</sup> Bailey's Par for Autism



Welcome to Metacomet Country Club



Volunteers:  
Erin, Danielle, Beth &  
Spencer



Sponsorship Awards Display



Long-time Bailey's Par Golfers,  
Peter Troy & Garrett Long

*To those who participated as a golfer, a sponsor, a dinner guest or a volunteer, we could not do what we do without all of you!*

## 2017 UPCOMING EVENTS

NOVEMBER 3

**9<sup>th</sup> Annual WINE TASTING, ART SHOW & COMEDY EVENT**

Hosted by BAILEY'S TEAM for AUTISM  
SHOWCASE LIVE - Patriot Place, Foxboro



## 2018 UPCOMING EVENTS

MARCH 25 **7<sup>th</sup> Annual BAILEY'S RUN FOR AUTISM**

Neponset Avenue, Foxboro, MA  
After Party at Waxy O'Connor's Irish Pub

## APRIL IS AUTISM AWARENESS MONTH

APRIL 2 **WORLD AUTISM AWARENESS DAY**

APRIL 11 **9<sup>th</sup> Annual EDUCATION SERIES**

**HAPPY SQUARE PEGS:**

Embracing the strengths of autism, while sharing positive management strategies for an enriched autistic life.

*Presented by Patti Menzel*

Holiday Inn Mansfield-Foxboro

31 Hampshire Street, Mansfield, MA

MAY 12 **8<sup>th</sup> Annual BAILEY'S ANIMAL ADVENTURE**

Roger Williams Park Zoo  
Providence, RI

JUNE 10 **14<sup>th</sup> Annual BAILEY'S PAR FOR AUTISM**

**Charity Golf Tournament**

Metacomet Country Club  
Providence, RI

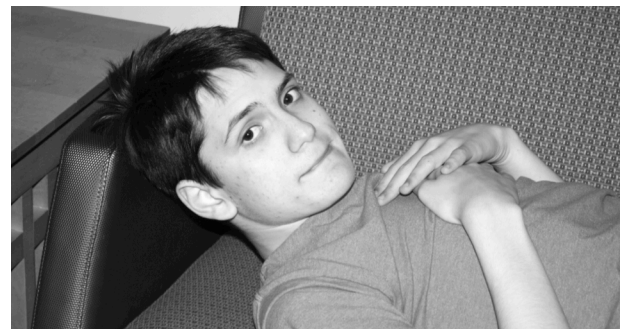
AUGUST 1 **ANNUAL CAMPAIGN BEGINS**

NOV 2 **10<sup>th</sup> Annual WINE & SPIRITS TASTING**

Hosted by BAILEY'S TEAM for AUTISM

Showcase Live - Patriot Place, Foxboro, MA

Watch for our next **BAILEY'S TEAM NEWSLETTER** to be distributed in March, 2018



# BAILEY'S TEAM BOARD OF DIRECTORS

## OFFICERS



Sammi Robertson  
President



Amy Laurent  
Vice President



Dan Joyce  
Treasurer



Amy Tonkonogy  
Clerk/Funding Coordinator

## DIRECTORS



Tom Buckley



Sheila Burgess



Tony Calcia



Keith Duclos



Beth Jerskey



Paul LaCava



Doug Robertson



Betsy Roche

**IF YOU WOULD LIKE TO SUPPORT BAILEY'S TEAM...**  
**DONATIONS ARE ALWAYS WELCOME 😊**



Name \_\_\_\_\_

Address: \_\_\_\_\_

City State Zip

Phone: \_\_\_\_\_ Email: \_\_\_\_\_

Enclosed is my donation in the amount of \$ \_\_\_\_\_  Cash  Check # \_\_\_\_\_

Credit Card (*Please circle one*): MasterCard / Visa / AMEX / Discover

Acct. # \_\_\_\_\_ Exp. Date: \_\_\_\_\_

Please send this form along with your payment to:

Bailey's Team for Autism \*164 Westside Avenue \* North Attleboro, MA 02760

[A receipt will be returned for all credit card payments]

*Thank you!*



Bailey's Team for Autism  
164 Westside Avenue  
North Attleboro, MA 02760