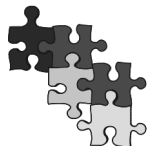


# BAILEY'S TEAM for AUTISM

Raising funds and awareness in support of individuals living with autism spectrum disorders and their families, with a focus on programming, education, and research.

Bailey's Team is helping to put the pieces together!



## OFFICERS

Sammi Robertson  
President

Beth Jerskey  
Vice President

Boston Child Study Center

Dan Joyce  
Treasurer

Bright Horizons  
[Retired]

Betsy Roche  
Clerk

Amego, Inc.

## DIRECTORS

Thomas Buckley  
Foxborough  
Fire & Rescue

Sheila Burgess  
Hockomock YMCA

Keith Duclos  
The Edinburg Center

Paul LaCava  
Rhode Island College

Sue Linehan  
F.J. Linehan & Associates, Inc.

Trish Martins  
Lifespan/Bradley Schools

Douglas Robertson  
Visual Creations, Inc.

## HONORARY BOARD MEMBERS

Irwin & Roberta Chafetz

Elaine Hall

Stephen Shore

FALL 2022 Newsletter – Prepared by Sammi Robertson

Dear Friend,

Welcome to the twenty-eighth edition of our BAILEY'S TEAM for AUTISM newsletter! We have included updates on our fundraising success, our life with Bailey... his successes and challenges, our upcoming event schedule, as well as other plans for the future. We thank you for your continued interest and support and hope you enjoy our newsletter.

## BAILEY'S TEAM EVENTS COME BACK STRONGER THAN EVER WITH GOLF RETURNING TO A FULL FIELD, BOTH ZOO EVENTS SOLD OUT... AND A VERY SUCCESSFUL ART SHOW!

### WHAT A YEAR IT HAS BEEN...

We are pleased to share that we were able to return to our full schedule of events in 2022.

We are looking forward to continuing our annual event schedule in 2023 with the exception of our annual Education Series. With that said, we will consider bringing this event back in 2024 depending on the feedback that we receive as a result of this decision.

\*\*\*\*\*

Please join us on

**SUNDAY, APRIL 16<sup>th</sup>, 2023**  
for our 11<sup>th</sup> annual

***Bailey's Run for Autism***



More details to come.

\*\*\*\*\*



THE ROBERTSON  
FAMILY &  
BAILEY'S TEAM  
MOURN THE LOSS OF  
BAILEY'S BELOVED  
GRANDMOTHER,  
BARBARA  
ROBERTSON



### WE HOPE YOU WILL JOIN US FOR OUR 13<sup>TH</sup> ANNUAL WINE TASTING

FRIDAY, NOVEMBER 4<sup>TH</sup>

At **SKYLINE** at **WATERPLACE**

1 Finance Way, Providence  
1<sup>st</sup> Floor

\$85.00 per person  
Includes Valet Parking

Event includes a Light Savory Menu, Cash Bar, Raffle, Silent Auction, and much more!

All proceeds from this event will support Bailey's Team for Autism, raising funds, awareness, and acceptance in support of individuals living with autism spectrum disorders and their families.

Visit [www.baileysteam.org](http://www.baileysteam.org) for more information.

OUR 3<sup>RD</sup> ANNUAL

*Celebrating Art & Autism*

WAS A HUGE SUCCESS!

[See page 4 for more information]

DOUG & SAMMI  
ROBERTSON  
RECEIVE THE VETSTEIN  
FOUNDERS AWARD  
FROM THE  
LEAGUE SCHOOL OF  
GREATER BOSTON!



For more information about BAILEY'S TEAM for AUTISM, please visit [www.baileysteam.org](http://www.baileysteam.org)

## **A Message from the President FAMILY UPDATE**

Dear Friends,

It has been a tough year with a lot of loss for our family. After losing Marcia, Bailey's maternal grandmother in January, only a few months later, "Nana Barbara" also passed away at the beginning of May. It was such a difficult time for us all, and in his own way, Bailey understood that they were no longer with us. Now at the mention of loss or having lost our loved ones, Bailey quickly recites all of those who have passed who were close to us in recent years beginning with his Grandpa. He will say "I lost my Grandpa, Nana Marcia, Nana Barbara, Auntie Nancy and Tony!" He feels this loss and I believe that when he recites this, he is paying homage to those who have passed.

This year has also brought good things to our family. Bailey continues to do well in his adult programs. As a result of his success in his placement at the Mansfield Redemption Center, where he spends part of his day working, we decided to shift his schedule to have more hours in this setting where he can continue to learn how to contribute in a job setting. The Redemption Center feels like an extension of the North Attleboro High School program with an extraordinary staff and support system. Their kindness and respect toward Bailey feels natural and pushes him to thrive.



Bailey's other program – also in Mansfield – has served him well. It doesn't include a work experience; however, he does spend time doing a variety of activities and enjoys his time there. While he doesn't come home talking about programming, or whether he enjoyed his day, we can often determine what has transpired based on his mood or even sometimes what he *doesn't* say. If he doesn't protest returning the following day, it is considered a win! In addition, if he knows the schedule and what is expected of him, he is typically content in any programming. If we must alter his schedule, due to a holiday or scheduled conflict, we can simply prepare him the night before and he is easily redirected. He just wants the information. At times, I will even find him looking through my calendar to see where we might be the following weekend. It is so nice to see him comprehend the function of a written calendar, and it is even better to see him process the information to avoid anxiety.

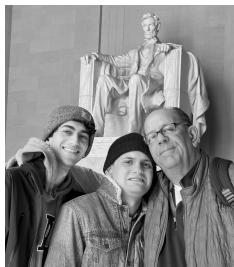
Bailey continues to volunteer at a real estate office each week – something he has done since high school. He arrives on Wednesday afternoons where they have an "in box" and work waiting for him. Sometimes it takes only 30 minutes, and other times he is occupied for close to 90 minutes. Either way, he works quickly and efficiently, and they welcome him with open arms. It's nice to know that there is yet another place for him where he is valued!

Fortunately, or unfortunately (at times), Bailey continues to retreat to his "man-cave" in our basement where he plays on the computer, draws incredible masterpieces, and watches horror movies. In fact, he rents movies daily and often rents the same movies repeatedly because we haven't been able to teach him the difference between renting and buying a movie. He especially likes watching these movies while he is playing video games and/or drawing his favorite characters.

One of our many blessings is that his caregiver, "Sweetie," continues to be very dedicated to him and to our family. Not only does she take very good care of him, but she understands him and knows when to stand back and let Bailey be Bailey. She loves him and the feeling is very mutual. What makes their relationship so special is that he understands boundaries with her and respects that she has her own special someone. We feel very lucky to have found her. Building a network of supports has always been a very crucial part of caring for Bailey. We have had wonderful people in our life because of his autism; however, as expected, people move on. It is scary to know that we will always need to work on forming new and special relationships as we prepare for his future.



Mom & Bailey at the July 4<sup>th</sup> Chatham Parade



Spencer, Bailey & Dad at the Lincoln Memorial



Bailey & "Sweetie" at his cousin's wedding



Bailey at the Franklin Delano Roosevelt Memorial – Last in the Bread Line!



Bailey & "Sweetie" At the Smithsonian's National Zoo in DC

## FAMILY UPDATE

[Continued from page 2]

And now for the rest of the family...

Rachel & Jeff just celebrated their 1<sup>st</sup> Anniversary... amazing to think it has already been one year! They are doing well and enjoying their life, their respective jobs, and we're enjoying having them settled in only 15 minutes away.

Spencer spent the summer in D.C. and has begun his fourth year at American University. He is on track to graduate with a degree in Business and Entertainment in December of 2023 and after that – we know he will go on to do great things!

Lindsay and the girls are enjoying their new home. Lindsay continues to work for Bucks County in their Domestic Relations department, while Georgie and Bernadette are in grades 4 and 2 respectively. We don't get to see them much due to distance, but Spencer and Rachel have travelled many times to see Lindsay and their favorite nieces!

As for us, we've spent a lot of time at the Cape, our home away from home! We wish you all the best... Be well and stay healthy.

*With love from Sammi & Doug Robertson*



Lindsay, Sammi & Rachel  
At Pine Hills Golf Club  
Plymouth, MA



Bernadette & Georgie  
Back to School



Spencer & Rachel  
Chillin' in DC



Bailey & Dad



Rachel, Bailey & Jeff  
July 4<sup>th</sup> Parade – Chatham



Spencer, Lindsay & Rachel



Rachel & "Sweetie" (Erin)  
Bailey's Par Charity  
Golf Tournament



Uncle Spencer &  
Bernadette

## IN MEMORY OF "NANA BARBARA" ROBERTSON



Barbara Robertson passed away on May 2<sup>nd</sup>. She was very close to her family and treasured her seven grandchildren and five great grandchildren.

It pained her to be separated from her family during the pandemic, but so enjoyed several visits from them outside her kitchen window!

Rachel and Spencer have fond memories of their overnights with Nana and Grandpa and... Spencer's several trips as a toddler to visit Barbara's friends and family as each one made their way into a nearby nursing home.

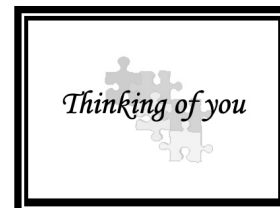
Barbara was very close to her twin sister, Beverly ("Auntie Bev"). Auntie Bev's children were like Barbara's own and were very supportive and helpful dotting on their "Auntie Barbara" in her final days.

Barbara attended many Bailey's Team events through the years. Her love and smile will be sorely missed.

## TRIBUTE CARDS

Our Tribute Card Program provides the opportunity to make a donation in honor of a special someone, in celebration of a special occasion or in memory of a loved one. To date, this initiative has raised over **\$25,550** for Bailey's Team.

If you would like to make a donation in honor or in memory of someone special, please visit our website, and download our tribute form for more information.



If you would like to purchase a 2023 Bailey's Team calendar, please contact [sammirobertson@comcast.net](mailto:sammirobertson@comcast.net).

**2023 BAILEY'S TEAM**  
*Celebrating Art & Autism*



Jellyfish created by Julia Sposato

## BAILEY'S TEAM SUPPORTS THE BOSTON MEDICAL CENTER AUTISM PROGRAM

Autism often elevates the complexity of emergency room visits and inpatient stays. The patient's symptoms and the hospital environment can intensify sensory behaviors. Deficiencies in receptive and expressive language can frustrate a patient who can't verbalize what's wrong or what hurts. Likewise, health care workers, not trained or experienced with autism, may inadvertently misread, or discount the patient's complaint, or find the patient's behaviors disruptive and distracting.

In recent years, the Boston Medical Center Autism Program has been designing solutions that offer resource support, behavioral guidance, and patient advocacy for pediatric patients with autism. In addition to providing hospital staff with tailored training, an Autism Resource Specialist (ARS) provides sensory tools, communication boards, visual materials, and behavior reinforcement supplies that assist in calming and redirecting patients exhibiting sensory overstimulation. Importantly, the ARS is deployed within both the pediatric emergency room and the pediatric inpatient unit to provide behavioral consultations that help patients with autism complete their medical procedures. Further, the ARS serves as a key intermediary who can go between both the patient and staff, thereby ensuring a more comprehensive, efficient, least disruptive, and satisfying hospital visit.

Bailey's Team is pleased to have had the opportunity to offer grants to the BMC Autism Program to financially support the critically needed efforts of the ARS team. (Costs relating to an ARS is not typically covered by health insurance.) Grants of \$10,000 and \$5,000 were awarded by Bailey's Team in 2021 and 2022, respectively. We applaud and encourage the BMC Autism Program in their ongoing efforts to facilitate emergency room and inpatient care for individuals with autism and their families.

---

---

## Celebrating Art & Autism

Our third annual art show, *Celebrating Art & Autism*, was a great success and featured several returning artists. The exhibit was on display from September 1<sup>st</sup> thru 30<sup>th</sup> and our "Meet the Artists" event was held on Friday evening, September 16<sup>th</sup>. In addition to the 50 pieces available for auction, we featured 14 special pieces that were available for sale.

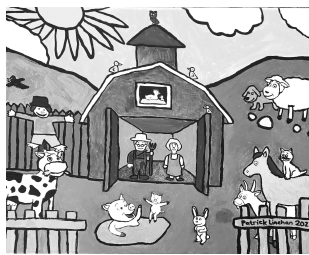
Please see below for a sampling of the art that was on display along with pictures of participating artists.



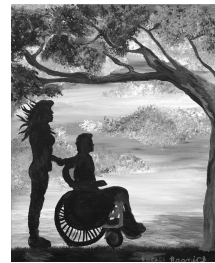
Blackbirds created by  
Dominic Killiany



Mario created by  
Bailey Robertson



Barnyard Fun created by  
Patrick Linehan



Accessible Dream  
created by  
Rachel Rasnick



Gustav Klimt's  
Tree of Life created  
by Juia Sposato

Meet some of our Artists:



Erin



Emily



Patrick



Julia



Bailey



Dominic



Rachel



Elena



Conno

## **BAILEY'S TEAM THANKS AND VALUES DONORS & VOLUNTEERS**

Life in the autism community certainly feels different now than in the emotionally charged and heartbreaking days twenty plus years ago when the incidence of autism began to disrupt so many young families in America and around the world. Since those early days, much has certainly changed for those dealing with a diagnosis of autism. Concrete information for the newly diagnosed now exists. Clinically and educationally, effective strategies have been designed and continue to be studied, developed, and refined. As time moves forward, the hope is that these strategies will become more consistently applied within and across all school districts and the greater community.

The many elements and levels of care and support for individuals with autism continue to gain structure and mature. And they will need to, as more individuals with autism transition to adulthood, and as family caregivers age.

Government relations and advocacy have progressed from early-stage state house visits to organized, full-time activism. This advocacy is critical considering the increasing need for future residential services and current challenges in retaining direct service caregivers. Awareness and sensitivity continue to be cultivated across the general population, both through agency efforts as well as organically, because now there are so many people in our communities with autism.

Yes, we have come a long way. Nonetheless, there is so much more to do. We at Bailey's Team for Autism remain committed to raising funds, awareness, and acceptance to support people living with autism spectrum disorders and their families.

Originally established at a grass-roots level, Bailey's Team uniquely remains an all-volunteer organization. Its relevance is underscored by the numerous requests for funding received each year from agencies locally and across New England. These agencies are trying to secure the necessary grants to finance the services, support, and research that they aspire to carry out on behalf of individuals with autism.

Bailey's Team for Autism can't fulfill our role without the support of all of you, our donors and volunteers. You ensure the success of our mission and events.

Please know that we recognize, and happily acknowledge, that Bailey's Team for Autism can't do what we do without our wonderful donors and volunteers.

Please know that your contributions positively affect the many agencies that Bailey's Team is able to support with funding.

On behalf of the Board of Directors, we are so incredibly grateful for your time and dedication to our mission.

---

### **THE PUZZLE PIECE...**

In recent years, the puzzle piece representing autism has become somewhat of a disputed symbol. Several high-functioning individuals on the autism spectrum, who are able to effectively articulate their thoughts and feelings, feel that the puzzle piece implies a need to "fix" something about them. While we respect and value the input and perspective of these individuals, there remains a large community of people on the autism spectrum who require daily support, supervision, and assistance. For this expanding group of individuals, the need to better understand autism is paramount.

For Bailey's Team, the puzzle piece provides hope and represents community. Our logo reflects the interlocking and connectedness of so many caregivers, educators, clinicians, and researchers, all representing the many puzzle pieces who together support the autism community. It is for this reason that we continue to maintain and share our logo as an important part of who we are as a resource and funder supporting other organizations helping people on the autism spectrum.

We are not in any way trying to "fix" anyone – we are simply acknowledging and supporting the very many individuals with autism who need our help.



Enjoy some of the photos from our events this year:



Bailey's Run Volunteers: (L to R)  
Bill Cannata, Tom & Linda Buckley, Christine Leslie,  
Heather Bedard & Danielle Buckley



Bailey's Par Tournament Golfers: (L to R)  
Tom Cappadona, Mike Croak, Jerry Hennessy, Bill Conroy, and  
Tournament Co-Chair, Doug Robertson



Bailey's Team Celebrating Art & Autism Artists: (L to R)  
Connor Thompson, Bailey Robertson, Patrick Linehan,  
Emily Kirstein & Erin Weir

## 2022 UPCOMING EVENTS

NOV 4 13<sup>th</sup> Annual WINE TASTING  
Skyline at Waterplace – Providence, RI



## 2023 UPCOMING EVENTS

### APRIL IS AUTISM AWARENESS MONTH

APRIL 2 WORLD AUTISM AWARENESS DAY

APRIL 16 11<sup>th</sup> Annual BAILEY'S RUN FOR AUTISM  
Foxboro, MA

DATE TBD 3<sup>rd</sup> Annual AUTISM FAMILY DAY AT  
FRANKLIN PARK ZOO

Franklin Park Zoo  
Boston, MA



**More info to come!**

MAY 13 13<sup>th</sup> Annual BAILEY'S ANIMAL ADVENTURE

Roger Williams Park Zoo  
Providence, RI

JUNE 11 19<sup>th</sup> Annual BAILEY'S PAR FOR AUTISM

Crystal Lake Golf Club  
Burrillville, RI

SEPT 1-30 4<sup>TH</sup> Annual CELEBRATING ART & AUTISM

Churchwood Gallery – North Attleboro, MA

NOV 3 14<sup>th</sup> Annual WINE TASTING

(2023) Skyline at Waterplace – Providence, RI

Watch for our next BAILEY'S TEAM NEWSLETTER  
to be distributed in March 2023



Bailey's Team Celebrating Art & Autism Reception held at the  
Churchwood Gallery, Friday, September 16, 2022

*We hope you will join us throughout the year!*

## THANK YOU NATIVE SUN!



Bailey's Team for Autism would like to acknowledge Native Sun for its generous support. The contributions to Bailey's Team reflect Native Sun's core value of giving back to the community.

Earlier this year, Native Sun opened its doors as a cannabis dispensary in North Attleboro, MA. Beyond a structurally beautiful exterior, customers will discover a bright, clean interior with friendly, approachable, and knowledgeable staff. We encourage our supporters, who are seeking high quality cannabis products, to visit Native Sun.

Bailey's Team for Autism thanks Native Sun for both its compassion for the autism community and its financial support of Bailey's Team.

---

---

If you have any ideas of other opportunities for Bailey's Team to reach out to potential corporate sponsors and/or have information about companies who participate in a employer "match" program, please contact us to help us raise funds to support our mission.

---

---

### BAILEY'S TEAM BOARD OF DIRECTORS

#### OFFICERS



Sammi Robertson.  
President



Beth Jerskey  
Vice President



Dan Joyce  
Treasurer



Betsy Roche  
Clerk

#### DIRECTORS



Tom Buckley



Sheila Burgess



Keith Duclos



Paul LaCava



Sue Linehan



Trish Martins



Doug Robertson

---

### IF YOU WOULD LIKE TO SUPPORT BAILEY'S TEAM...

DONATIONS ARE ALWAYS WELCOME ☺



Name \_\_\_\_\_

Address: \_\_\_\_\_  
City State Zip

Phone: \_\_\_\_\_ Email: \_\_\_\_\_

Enclosed is my donation in the amount of \$ \_\_\_\_\_  Cash  Check # \_\_\_\_\_

Credit Card (Please circle one): MasterCard / Visa / AMEX / Discover

Acct. # \_\_\_\_\_ Exp. Date: \_\_\_\_\_

Please send this form along with your payment to:

Bailey's Team for Autism \*164 Westside Avenue \* North Attleboro, MA 02760

[A receipt will be returned for all credit card payments]

*Thank you!*



Bailey's Team for Autism  
164 Westside Avenue  
North Attleboro, MA 02760

*At least **1 in 44** children will be diagnosed with an autism spectrum disorder this year!  
Help us support this autism community by joining our team!*